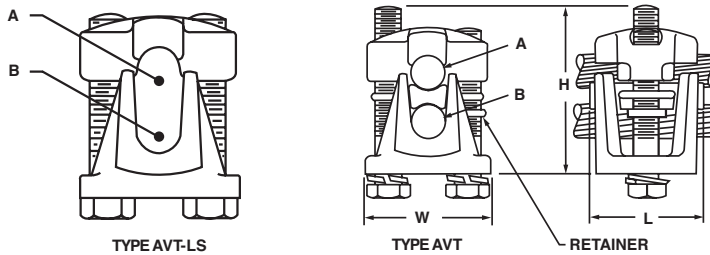


Aluminum Heavy Duty Parallel Clamps

Type AVT

- Top and bottom castings are manufactured from high strength aluminum alloy
- Spacer is manufactured from pure high conductivity aluminum alloy
- Recommended for heavy duty dissimilar metal applications
- Accommodates a range of aluminum, copper, and ACSR conductors in either groove (place aluminum above copper) +
- Specially designed wrap-around finger on spacer minimizes cold flow over entire conductor range
- Rounded contours for easy taping
- Staking the longer of the two bolts makes the assembly one unit with no loose parts to drop
- Use of an oxide inhibitor is recommended for aluminum and ACSR installations



CATALOG NUMBER		CONDUCTOR RANGE (AWG, ACSR, AND AR*)		APPROXIMATE DIMENSIONS (IN.)			BOLT SIZE
STEEL HARDWARE	ALUMINUM HARDWARE	A MAIN	B TAP	H	L	W	
AVT-0 AVT-0LS	—	3 Sol. - 1/0 Str. 4 - 1/0 ACSR 6 AR	6 Sol. - 1/0 Str. 6 - 1/0 ACSR	2.88	1.56	1.63	5/16
AVT-1 AVT-1LS	—	2 Sol. - 3/0 Str. 3 - 2/0 ACSR 6 - 4 AR	6 Sol. - 3/0 Str. 8 - 2/0 ACSR	2.13	1.75	1.75	5/16
AVT-2 AVT-2LS	AVT-2A	1/0 Sol. - 250 kcmil 1 - 4/0 ACSR 6 - 4 AR	6 Sol. - 250 kcmil 6 - 4/0 ACSR	2.63	2.00	2.00	3/8
AVT-3	AVT-3A AVT-3ALS	3/0 Sol. - 350 kcmil 336.4 - 397.5 ACSR 2/0 - 3/0 AR	6 Sol. - 350 kcmil 6 - 336.4 ACSR	3.06	2.25	2.44	1/2
AVT-4	AVT-4A AVT-4ALS	350 - 500 kcmil 336.4 - 397.5 ACSR 2/0 - 3/0 AR	4 Sol. - 500 kcmil 5 - 397.5 ACSR	3.56	2.75	2.50	1/2
AVT-5	AVT-5A AVT-5ALS	350 - 874.5 kcmil 336.4 - 715.5 ACSR 4/0 - 397.5 AR	3/0 - 874.5 kcmil 3/0 - 715.5 ACSR	4.06	3.38	2.81	1/2
AVT-6	AVT-6A AVT-6ALS	450 - 1000 kcmil 397.5 - 900 ACSR 4/0 - 397.5 AR	3/0 - 1000 kcmil 3/0 - 900 ACSR	4.25	3.75	3.19	5/8

+Not recommended for copper to copper applications unless part is tin plated

*AR--Aluminum cable rating with Preformed Armor Rods

For tin plating, suffix the catalog number with "-TN"

Add suffix "-BF" to catalog number for pre-filling with Cual-Aid and bagging

Suffix "-LS" for less spacer (same length hardware)